

LABRADOR RETRIEVER CLUB OF ALBERTA

OBEDIENCE AND RALLY-O TRIALS

SEPTEMBER 20 AND 21, 2014

PLEASE SEE THE ATTACHED SITE MAP FOR PARKING, BENCHING AND POTTING AREAS. PLEASE KEEP DOGS OUT OF THE PARK AT ALL TIMES. THIS RULE WILL BE ENFORCED, VIOLATORS WILL BE EXCUSED FROM THE TRIALS.

Schedules are based on the following number of minutes per dog:	
Novice A, B, Veterans	7.7 MINUTES
Open A, B	8.5 MINUTES
Utility A,B	10 MINUTES

Please note: The judges will take breaks at their own discretion.

OBEDIENCE JUDGING SCHEDULE

TRIAL #1, SATURDAY SEPT. 20, 2014					
IMMEDIATELY FOLLOWING RALLY					
RING #1 CAROL ALLINSON					
UTILITY A	3	118-120			
UTILITY B	9	121-125, 127, 129-131			
OPEN B	12	102-106, 108, 109, 111, 112, 114, 115, 117			
NOVICE B	2	100, 101			

TRIAL #2, SATURDAY SEPT. 20, 2014					
9:00 A.M.					
RING #2, GWEN ROSWELL					
NOVICE B	2	100, 101			
OPEN B	10	102-104, 108, 110, 111, 113-116			
UTILITY A	3	118-120			
UTILITY B	5	121, 123, 128-130			

TRIAL #3, SUNDAY SEPT. 21, 2014					
IMMEDIATELY FOLLOWING RALLY					
RING #2, GWEN ROSWELL					
UTILITY A	3	118-120			
UTILITY B	6	121-124, 129, 131			
OPEN B	8	102-105, 108, 109, 114, 117			
VETERANS	1	118			
NOVICE B	2	100, 101			

TRIAL #4, SUNDAY SEPT. 21, 2014**9:00 A.M.****RING #1, CAROL ALLINSON**

NOVICE B	2	100, 101		
OPEN B	9	102-104, 107, 108, 110, 112, 114, 116		
UTILITY A	3	118-120		
UTILITY B	5	121, 123, 126, 127, 129		

RALLY OBEDIENCE JUDGING SCHEDULE**TRIAL #1, SATURDAY SEPT. 20, 2014****9:00 A.M.****RING #1 TAMI MARKS**

<i>10 Minute Walk-Through</i>				
NOVICE A	2	200, 201		
NOVICE B	4	203-206		
<i>10 Minute Walk-Through</i>				
ADVANCED A	1	208		
ADVANCED B	8	209-216		
<i>10 Minute Walk-Through</i>				
EXC. B	9	217-221, 223-226		

TRIAL #2, SATURDAY SEPT, 20, 2014**TO FOLLOW OBEDIENCE****RING #2, GWEN ROSWELL**

<i>10 Minute Walk-Through</i>				
NOVICE A	2	200, 201		
NOVICE B	5	203-207		
<i>10 Minute Walk-Through</i>				
ADVANCED A	1	208		
ADVANCED B	7	209-212, 214-216		
<i>10 Minute Walk-Through</i>				
EXCELLENT B	8	217-220, 222, 224-226		

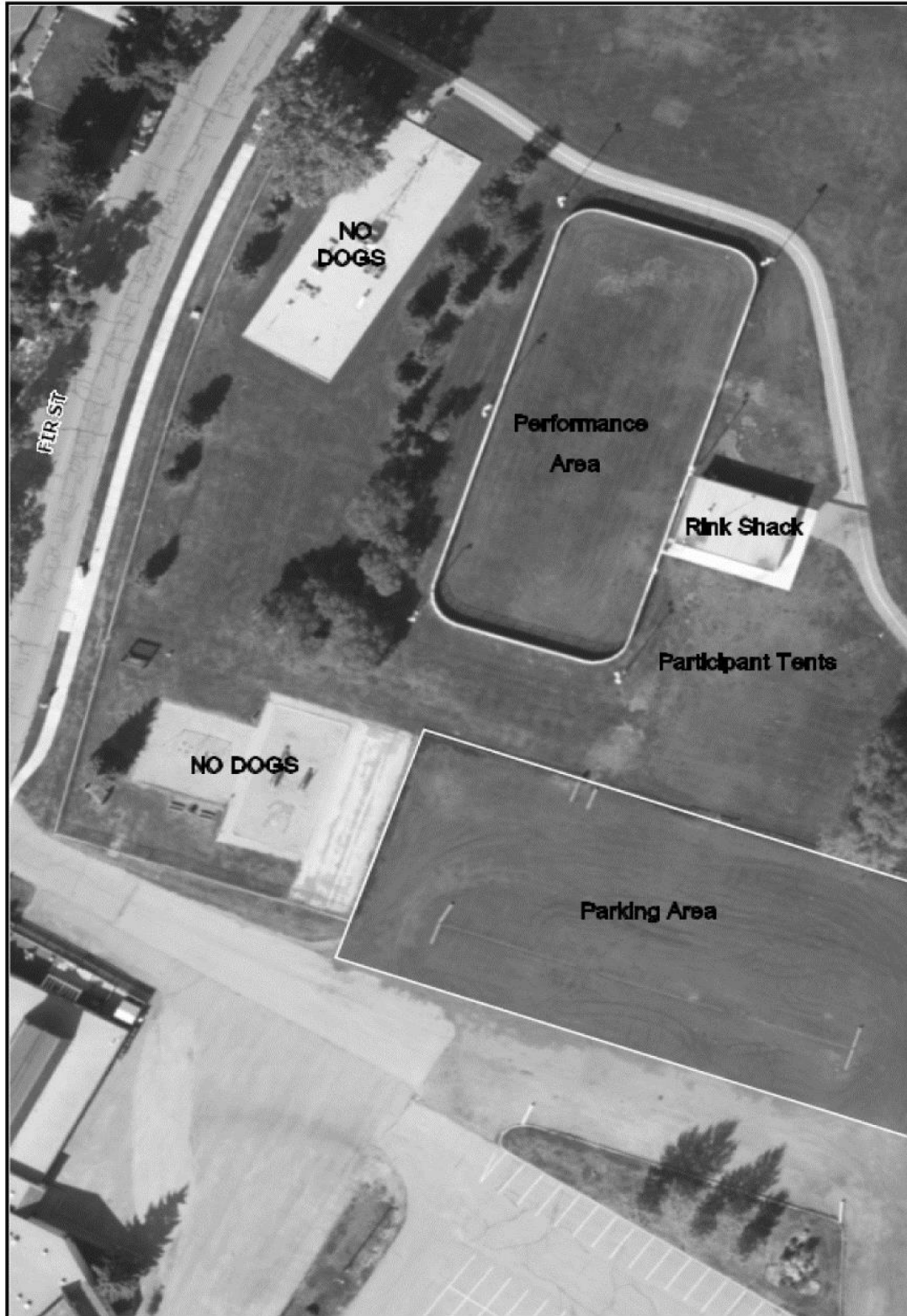
TRIAL #3, SUNDAY, SEPT. 21, 2014**9:00 A.M.****RING #1 GWEN ROSWELL**

<i>10 Minute Walk-Through</i>				
NOVICE A	2	200, 201		
NOVICE B	6	202-207		
<i>10 Minute Walk-Through</i>				
ADVANCED A	1	208		
ADVANCED B	6	209, 211-215		
<i>10 Minute Walk-Through</i>				
EXCELLENT B	6	217, 218, 220, 223-225		

TRIAL #4, SUNDAY SEPT. 21, 2014			
TO FOLLOW OBEDIENCE			
RING #2, TAMI MARKS			
<i>10 Minute Walk-Through</i>			
NOVICE A	1	200	
NOVICE B	5	202-206	
<i>10 Minute Walk-Through</i>			
ADVANCED A	1	208	
ADVANCED B	5	209, 211, 212, 214, 215	
<i>10 Minute Walk-Through</i>			
EXCELLENT B	5	217, 218, 220, 224, 225	

Please note: The judges will take breaks at their own discretion.

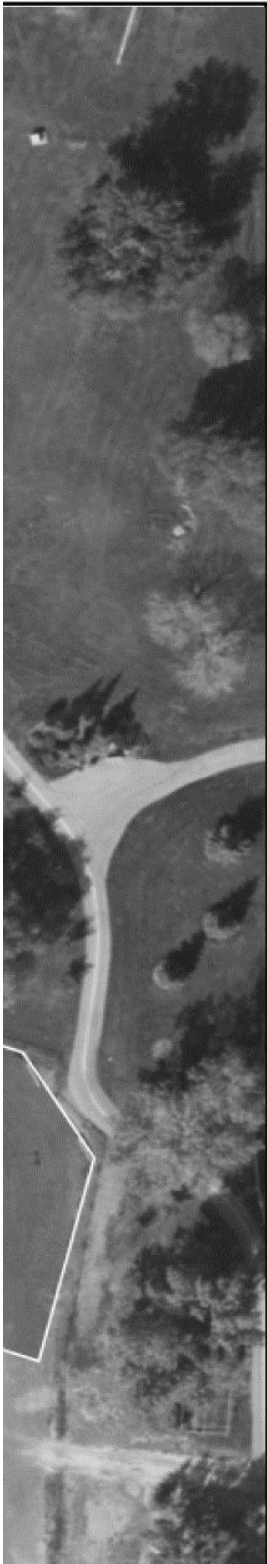
Dog Obedience Trials - Sherwood Heights



Strathcona County and its contributors will not be held responsible for errors and/or omissions. This map is intended for reference only. To purchase digital data please email gis@strathcona.ab.ca



**IG, AND
TIMES. THIS
TRIALS.**



Map printed on
11-Sep-14 01:29 PM