



Rocky Mountain Working Herding Club of Alberta

Judging Schedule and Exhibitor Information

Four All Breed Obedience Trials

Four All Breed Rally Obedience Trials

July 15th and 16th, 2021

Wet Noses Bed & Biscuit
223042 Highway 24 (#324) Carseland, AB

PLEASE READ THIS INFORMATION CAREFULLY Holding trials during the COVID-19 pandemic requires many changes. When you entered, you signified you have read and agreed to the information published in the Premium List AND any updated or changed information that may follow from the club and/or trial secretary. We will be strictly following all Federal, Provincial and Local guidelines regarding holding public events.

ALL Exhibitors and Guests must:

- Check in with the trial secretary to confirm their signed waiver has been received
 - Wear their wristband issued by the trial secretary
- Complete a home self-assessment prior to coming to the trials each day. Please stay at home if you do not pass the Self-Assessment

Masks are required during the Rally Walkthroughs and on the trial grounds when social distancing is not possible. Masks are not required any other time in the Obedience or Rally rings as long as social distancing is maintained.

Location

Go to www.wetnoses.ca and click on CONTACT for map and directions. Along with the large Wet Noses Sign visible in the driveway from highway 24, there is a 25-foot Canadian Flag as well as a Wet Noses flag just before the canal bridge. Please drive slowly and take caution if passing, as shoulders are steep.

Facility

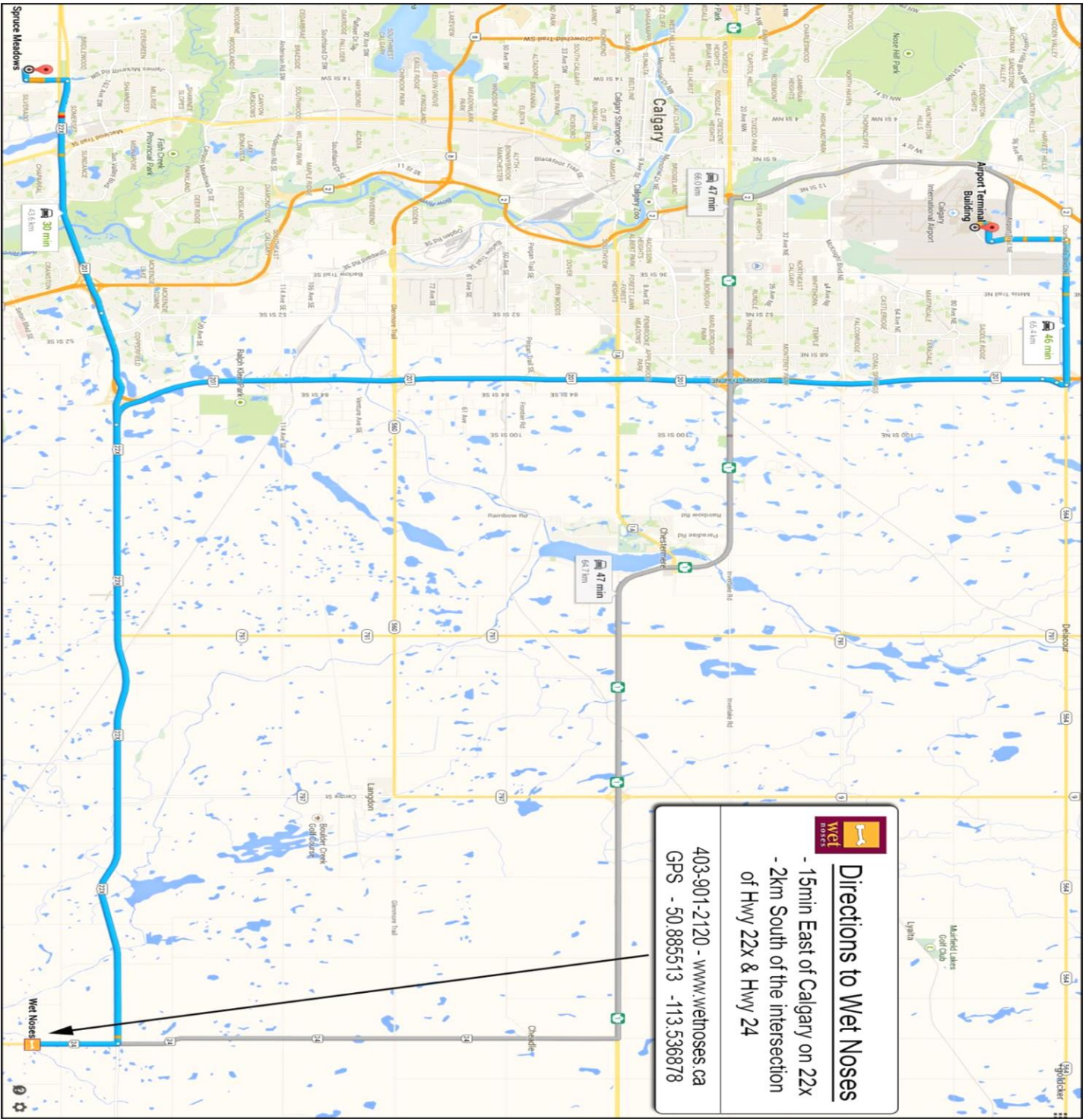
Wet Noses is a 50-acre K9 Exclusive Facility. Free Wifi is available On Site. Password: runclean
Dog Treats and Food will be available in the store. Dehydrated and RAW in stock.

Camping

Camping is in a separate field from the Obedience / Rally area and will be open from 3:00 pm onwards on Wednesday, July 14th. When you arrive at Wet Noses, the camping area is on your right hand side in a field north of the Obedience / Rally rings – please drive slowly as our Agility trials will be in progress and Agility campers may still be in the camping area. Please wait at the gate to the camping area and one of the club members or volunteers will check you in.

Benching

Benching for the Obedience / Rally trials is available within the Obedience / Rally zone provided proper social distancing is maintained between benching areas.



OBEDIENCE

Thursday, July 15th, 2021

Trial #1 Ring #2 Judge: Eve O'Keefe Start Time: 12:00 pm			Trial #2 Ring #2 Judge: Margaret Heningman Start Time: 8:00 am		
Class	# of Entries	Armbands	Class	# of Entries	Armbands
Utility B	4	119, 135, 136, 138	Utility B	4	119, 136, 138, 139
Utility A	8	127, 128, 129, 130, 131, 132, 133, 134	Utility A	7	127, 128, 129, 131, 132, 133, 134
Open 18B	7	120, 121, 122, 123, 124, 125, 138	Open 18B	8	120, 121, 122, 123, 124, 125, 126, 138
Open HA	3	116, 117, 118	Open HA	3	116, 117, 118
Open HB	1	119	Open HB	1	119
Novice A	2	104, 106	Trial #2 Ring #3 Judge: Margaret Heningman Start Time: Following Open HB		
Novice B	6	107, 109, 110, 112, 113, 114	Novice A	4	102, 104, 105, 106
Pre-Novice	3	100, 102, 103	Novice B	6	107, 108, 110, 111, 113, 115
			Pre-Novice	2	100, 101

Obedience Schedule - the Schedule is based on 9 dogs per hour in Pre-Novice, 8 dogs per hour in Novice, 7 dogs per hour in Open and 6 dogs per hour in Utility

*** Breaks will be given at the judge's discretion ***

OBEDIENCE

Friday, July 16th, 2021

Trial #3 Ring #2 Judge: Eve O'Keefe Start Time: 8:00 am			Trial #4 Ring #2 Judge: Margaret Heningman Start Time: 12:00 pm		
Class	# of Entries	Armbands	Class	# of Entries	Armbands
Utility B	5	119, 136, 137, 138, 139	Utility B	5	119, 135, 136, 137, 138
Utility A	7	127, 128, 129, 130, 131, 133, 134	Utility A	5	127, 128, 129, 131, 133
Open 18B	8	120, 121, 122, 123, 124, 125, 126, 138	Open 18B	7	120, 121, 122, 123, 124, 125, 138
Open HA	3	116, 117, 118	Open HA	3	116, 117, 118
Open HB	1	119	Open HB	1	119
Trial #3 Ring #3 Judge: Eve O'Keefe Start Time: Following Open HB			Novice A	4	102, 104, 105, 106
Novice A	4	102, 104, 105, 106	Novice B	3	108, 111, 113
Novice B	5	107, 109, 112, 113, 115	Pre-Novice	2	100, 101
Pre-Novice	1	100			

Obedience Schedule - the Schedule is based on 9 dogs per hour in Pre-Novice, 8 dogs per hour in Novice, 7 dogs per hour in Open and 6 dogs per hour in Utility

*** Breaks will be given at the judge's discretion ***

RALLY OBEDIENCE

Thursday, July 15th, 2021

Trial #1 Ring #1 Judge: Nicole Wiebe Start Time: 1:00 pm			Trial #2 Ring #1 Judge: Kelly Ladouceur Start Time: 8:00 am		
Class	# of Entries	Armbands	Class	# of Entries	Armbands
Master	6	235, 241, 242, 243, 244, 245	Master	6	235, 241, 242, 243, 244, 245
Excellent B	4	235, 238, 241, 242	Excellent B	4	235, 238, 241, 242
Advanced B	6	236, 237, 238, 239, 240, 241	Advanced B	6	236, 237, 238, 239, 240, 241
Intermediate	2	233, 234	Intermediate	2	233, 234
Novice A	11	200, 201, 203, 204, 205, 206, 209, 210, 212, 213, 214	Novice A	10	200, 201, 203, 204, 205, 207, 209, 210, 212, 213
Novice B	13	215, 216, 218, 219, 220, 221, 222, 223, 226, 227, 228, 229, 231	Novice B	14	215, 216, 218, 219, 221, 222, 223, 224, 226, 227, 228, 229, 230, 231

Rally Obedience Schedule - The schedule is based on 15 dogs per hour as well as 20 minutes for course reset and walk thru for Novice, Intermediate, Advanced, Excellent, and Master. Masks are required during Walkthroughs.

*** Breaks will be given at the judge's discretion ***

RALLY OBEDIENCE

Friday, July 16th, 2021

Trial #3 Ring #1 Judge: Nicole Wiebe Start Time: 8:00 am			Trial #4 Ring #1 Judge: Kelly Ladouceur Start Time: 1:00 pm		
Class	# of Entries	Armbands	Class	# of Entries	Armbands
Novice A	11	200, 201, 202, 203, 204, 205, 208, 211, 212, 213, 214	Novice A	10	200, 201, 202, 203, 204, 207, 208, 211, 212, 213
Novice B	14	215, 216, 217, 218, 219, 220, 223, 224, 225, 226, 227, 228, 229, 231	Novice B	13	215, 216, 217, 218, 219, 223, 225, 226, 227, 228, 229, 230, 231
Intermediate	3	232, 233, 234	Intermediate	3	232, 233, 234
Advanced B	5	236, 237, 238, 240, 241	Advanced B	5	236, 237, 238, 240, 241
Excellent B	4	235, 238, 241, 242	Excellent B	4	235, 238, 241, 242
Master	6	235, 241, 242, 243, 244, 245	Master	6	235, 241, 242, 243, 244, 245

Rally Obedience Schedule - The schedule is based on 15 dogs per hour as well as 20 minutes for course reset and walk thru for Novice, Intermediate, Advanced, Excellent, and Master. Masks are required during Walkthroughs.

*** Breaks will be given at the judge's discretion ***

Rocky Mountain Working Herding Club of Alberta / Wet Noses Inc.

COVID-19 Requirements

General Required Practices

1. RMWHCA members, judges and exhibitors are required to follow Federal, Provincial, Local and facility guidelines as presented below. Any changes in guidelines between the posting of this Premium List and the starting of each trial will also be followed.
2. Social distancing must be practiced. Maintain a distance of 6 feet / 2 Metres or more unless individuals are part of a family or cohort unit.
3. Masks are required during Rally Walkthroughs and on the trial grounds when social distancing is not possible. Masks are not required any other time in the obedience or rally rings as long as social distancing is maintained.
4. There will be plenty of hand sanitizer around the facility for personal use and sanitizer will be provided in the porta-potty
5. Bring your own pen/pencil. No common use pencils, pens or markers will be available.
6. As you park at Wet Noses, leave sufficient space between vehicles to allow for effective social distancing.

Information applicable to all participants

1. The trial grounds is limited to 200 people at a given time. Please maintain social distancing and wear a mask in situations where social distancing is not possible.
2. Take your win ribbon only if you plan on keeping it. Do not give ribbons back to the RMWHCA.
3. The trial secretary's designated space will be considered sacred ground. Barriers will be set up using a 9 Feet / 3 Metre perimeter to protect the trial secretary. Anyone who violates the space of the trial secretary will be asked to leave the trial grounds and may not return for the duration of the trials. No refunds for entries will be provided in this instance.

Trial Practices

1. Each exhibitor will complete a waiver of liability for RMWHCA and Wet Noses Inc as part of their entry (either online entry or mailed entry). No one will be allowed to participate who has not completed the required waiver. If you enter online, please print and bring a copy of your signed waiver. If you enter via a mailed entry, please ensure your paper entry includes a copy of your signed waiver.
2. Anyone exhibiting COVID symptoms will be asked to leave the trial grounds and will not be allowed to return.
3. Masks are required during Rally Walkthroughs and on the trial grounds when social distancing is not possible. Masks are not required any other time in the obedience or rally rings as long as social distancing is maintained.
4. Equipment will be sanitized at the end of each day.
5. Wristbands will be issued to all exhibitors and guests provided the guests names are included on the signed waiver.
6. Routines for each trial will be decided by the judge per standard CKC rules.
7. Standard Obedience Jump Heights apply to the Open and Utility classes.

Important Rules

There will be no off-leash activity allowed on the premises except in designated areas **after** trial hours. Dogs must be under control. Picking up after your dog and yourself is totally your responsibility - there is zero tolerance for waste left behind. If you are leaving any dog on the grounds for any reason, please leave your contact information highly visible at your camping area.

The Rocky Mountain Working Herding Club of Alberta and Wet Noses Inc. will not be responsible for the loss or injury to any dog, person, or vehicle/belongings whether the result of an accident or other cause during the trial weekend.

Thank you for entering our trials!!! We appreciate you abiding by ALL of these instructions. We wish to have a fun and enjoyable event for ALL!